

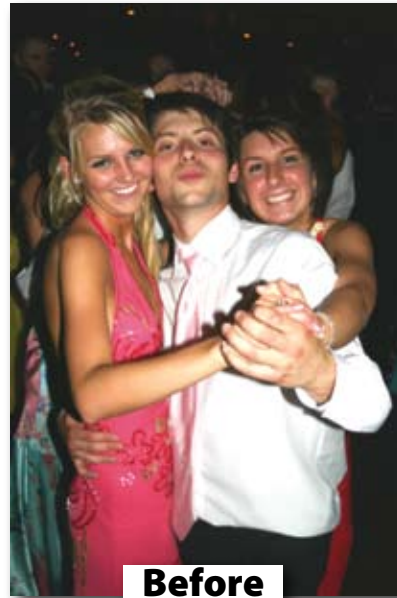
## Fixing a slightly blurry photo

### Reason we do it:

Have you ever had a photo you really wanted to use because the subjects were perfect? But it was just a little blurry so you didn't use it? Well, here's a quick technique that you can try to put it back into focus. It won't salvage every out-of-focus photo, but it will get some to look a whole lot better. It all has to do with blending modes and filters.

### Method:

- Step 1: Open the photo you want to use.
- Step 2: Choose Filters>Convert for Smart Filters.
- Step 3: In the Layers palette you should see a small icon appear at the bottom of the layer icon to let you know that it has been converted. (Figure A)
- Step 4: Choose Filters>Stylize>Emboss. Don't freak out! Your photo will look a bit strange. We're only half done. (Figure B)
- Step 5: Look in the Layers palette and find the little double arrows and double click on them to open the Blending Options dialog box. (Figure C)
- Step 6: From the drop down menu in the dialog box, choose Overlay. See how the photo looks. If you would like to try some other possible fixes (each one getting a little more edgy), choose any of the next four or five choices on the menu below Overlay. (Figure D)
- Step 7: If you find that the results are OK but some of the highlights are too sharp, you can fix it by choosing your paint brush, setting the foreground color to black, choosing the adjustment layer in the Layers palette, and painting black on the adjustment layer, which will paint out the mask and allow it to soften up those highlights while leaving the rest of the photo clearer. Make sure to use a brush with a soft edge.
- Step 8: Save as a JPEG or TIFF to place in InDesign or upload to YTO.



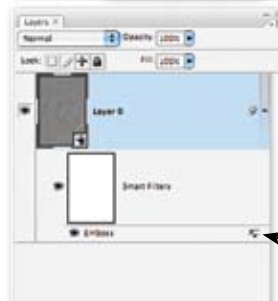
**Before**



**A**



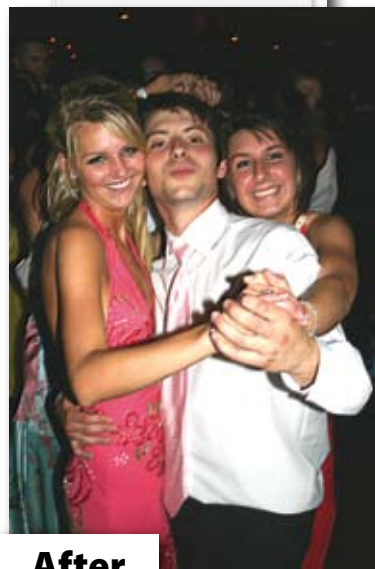
**B**



**C**



**D**



**After**